

<p>HEALTH ORDER DOOMS LODGE HALL COBWEBS</p>	<p>POLICE RAID SALOONS IN WAR ON INFLUENZA; KEEP CHURCH WINDOWS OPEN</p>	<p>'NONESSENTIAL' CROWDS BARRED IN EPIDEMIC WAR</p>
<p>Grip Ban on All Meetings Until Places Are Renovated; 21 Theaters Reopen.</p>	<p>Stringent New Orders Are Issued for Preventing Spread of Epidemic; Police Ambulances Are Drafted; 100,000 Doses of Vaccine on Way.</p>	<p>Churches and Saloons Exempt; Conventions, Athletics, Parties Hit.</p>
<p>GRIP VIGILANCE STILL NEEDED</p>	<p>1,613 NEW CASES SHOW DECREASE IN CITY; DOWNSTATE HIT WORST</p>	<p>FREE DOCTOR Influenza victims unable to pay for a doctor can obtain one by calling Main 447, Local 105, day or night.</p>
<p>Dr. Robertson Warns Against Relaxing Precaution, Despite Wane of Epidemic</p>	<p>FLU CURFEW TO SOUND FOR CITY SATURDAY NIGHT</p>	<p>CHURCH WINDOWS MUST STAY OPEN, SAYS ROBERTSON</p>
<p>'OPEN-FACE' SNEEZERS TO BE ARRESTED</p>	<p>Persons Not on Business Expected to Quit the Streets at 9 o'Clock.</p>	<p>Health Department Gives Out New Rules in Fight on Influenza.</p>
<p><small>Orders to arrest any person indulging in the "open face" sneeze or cough in public places.</small></p>	<p><small>The curfew will ring or, rather, blow in Chicago tomorrow night. Promptly at 9 o'clock the whistles of the police will sound.</small></p>	<p><small>CHICAGO DEPT. OF HEALTH - CUT 400</small></p>

Headlines from Chicago newspapers in 1918.



School children learning to gargle. Gargling was thought (incorrectly) to be one way to prevent influenza.

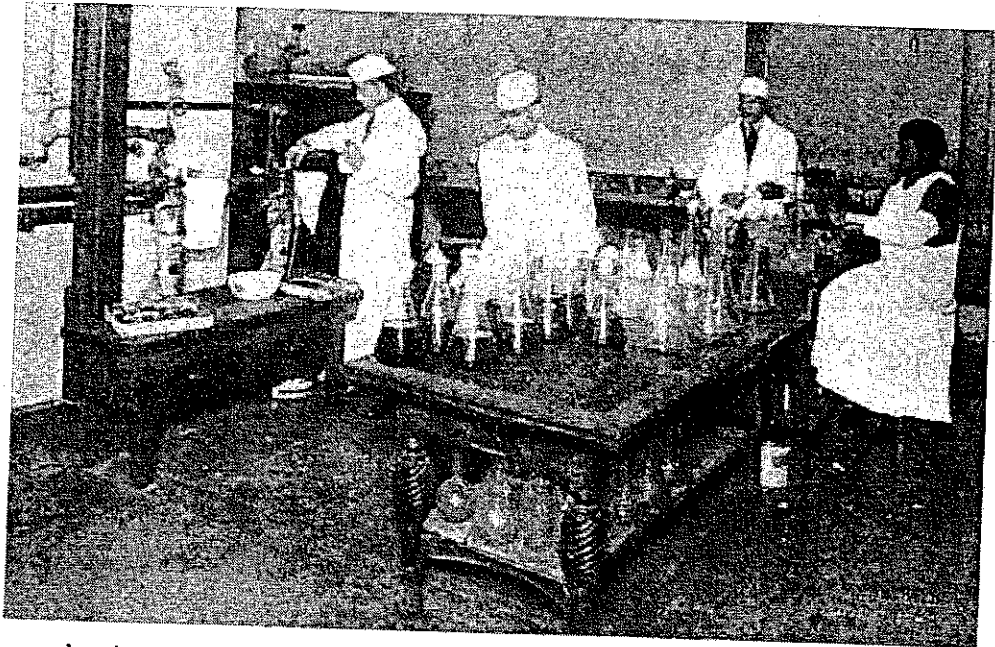


HARE
SUFFALCO, N. Y.

U.S. Army General Hospital, No. 4, Fort Porter, N.Y., November 18, 1918. Army medical personnel with patient.



During the 1918-19 flu epidemic, citizens in many cities were required to wear masks at all times.



Laboratory workers in 1918 used high-speed centrifuges to separate organisms from broth cultures.



The conductor on a Seattle streetcar will not permit the man without a mask to board.



Spraying throats was recommended as a treatment to prevent Spanish flu.